



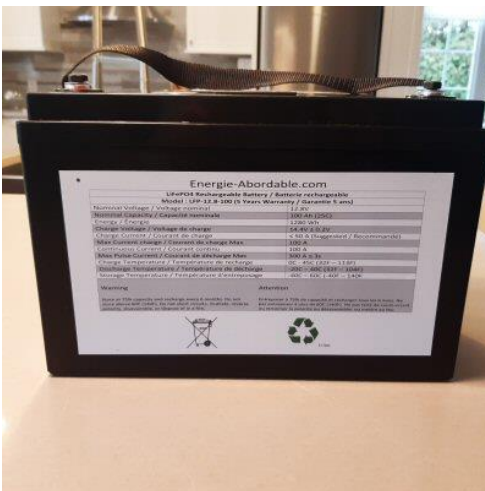
Group Purchase 2023

- LiFePO4
- Flexibles PV from 50 to 290 Watts
- Canadian Solar Bi-Facial

LiFePO4 (Lithium)

Canada: We're accepting order now

Caribbean: if you have a boat in the islands and want to switch to Lithium, here is your chance. We have an office in St-Vincent and access to a store in Grenada where we can have the batteries delivered.



[See electric spec here.](#)

Bluetooth fonction included.

NEW : Self Heating option for cabin, RV etc.

Here are the prices:

Model	Wh	Dimensions (mm)	Warrantie	Options	Special	Cost per Wh	Regular	Cost per Wh
12,8V - 100 Ah	1280	330*173*225	5 ans	Bluetooth inclus	529 \$	0,413 \$	634 \$	0,496 \$
12,8V - 120 Ah	1536	330*173*225	5 ans	Bluetooth inclus	605 \$	0,394 \$	725 \$	0,472 \$
		Dimentions équivalente : D27 & D31		Auto chauffante :	51 \$		61 \$	
12,8V - 150 Ah	1920	522*240*220	5 ans	Bluetooth inclus	772 \$	0,402 \$		
12,8V - 200 Ah	2560	522*240*220	5 ans	Bluetooth inclus	943 \$	0,368 \$		
				Auto chauffante :	67 \$			
12,8V - 300 Ah	3840	522*268*220	5 ans	Bluetooth inclus	1 341 \$	0,349 \$		
				Auto chauffante :	81 \$			
				Voltmètre :	16 \$			
Cycle de charge/décharge : >2500 @ 100% DOD; >3500 @ 80% DOD; >6000 @ 50% DOD								
Model	Wh	Dimensions (mm)	Warrantie	Options	Special	Cost per Wh	Regular	Cost per Wh
25,6V - 100 Ah	2560	522*240*220	5 ans		909 \$	0,355 \$		
25,6V - 150 Ah	3840	522*240*220	5 ans		1 279 \$	0,333 \$		
25,6V - 200 Ah	5120	522*268*220	5 ans		1 726 \$	0,337 \$		
				Bluetooth :	25 \$			
				Voltmètre :	20 \$			
Fontion Auto chauffante non disponible pour les Bat. De 24V :					n/d			
Cycle de charge/décharge : >2500 @ 100% DOD; >3500 @ 80% DOD; >6000 @ 50% DOD								

CURRENCY: Batteries delivered in Montreal are in **CND**. Those delivered in the West Indies are in **USD** because cost of delivery and import taxes are higher overthere.

Note: All the models with regular prices are available in th group purchase only.

Integrated Voltmeter

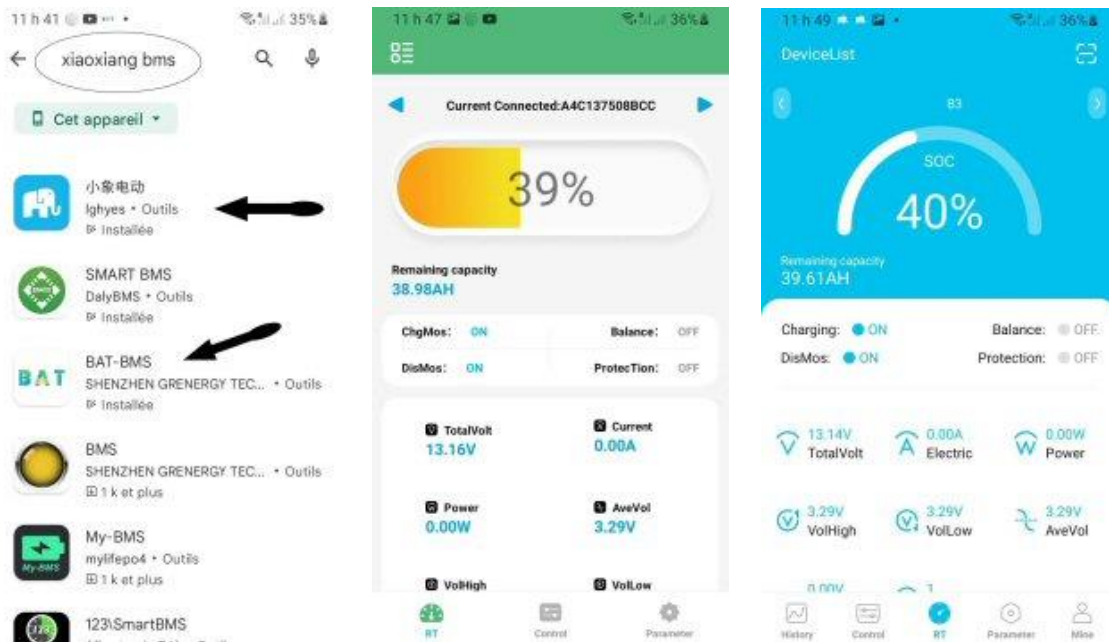
The optional voltmeter show both Capacity & Voltage of the batteries.



Bluetooth fonction allows the BMS to communicate to your smartphone all available information concerning the state of charge of the battery (global or individual cells), temperature etc. You can also cause the closing and opening of the battery remotely.

Here are two apps that work well. Type: "xiaoxiang bms" in Play Store.

There are surely many more:



The "Self-heating" function: all Lithium batteries have usage limitations at low temperatures. For example, our LiFePO4 batteries should never be recharged if the temperature of these cells is below 0C (32F). They should not be discharged (used) if its temperature is below -20C (-4F) . The Auto Heating function is controlled by the BMS. When the cell temperature is below 0C, the BMS will stop charging the battery and use the available energy from the Solar Panels or Charger to warm up the battery. As soon as it is above 5C, the heating is cut off and charging starts again.

This option is perfect for VR, trailers and cabins that are not heated in the winter. It would be desirable to build a 2" or even 4" insulated Styrofoam box to minimize heating time and maximize recharging time.

The heater is simply a heating film that is often found in the laser printer. It is a proven and reliable technology that has no moving parts that could break. In the case of our 100 and 120 AH batteries, the power of the element is 100W.

Contactez-nous pour plus de détail :

+1 (450) 444-6239

Email: info@affordableyachting.com

- The warranty is honored in Canada.



To read: popular texts to answer the many questions asked by people interested in replacing their lead batteries with LiFePO4. The texts are in French but FB will translate them for you. You can ask your questions in English. The following topics are covered:

- [What is a BMS?](#)
- [What is the Bluetooth fonction?](#)
- [How does work the self heating option?](#)
- [What does mean DOD?](#)
- [How to compare various battery models?](#)
- [How much LiFePO4 batteries do you need to replace lead batteries?](#)
- [Hybrid pack \(lead + Lithium\) is it a good idea?](#)

To order : [Email: info@affordableyachting.com](mailto:info@affordableyachting.com)



[Check our FB group](#)

Conditions for participating in the Purchase group

In order to obtain low prices, it is necessary to buy directly from the manufacturer a pallet of product at a time, i.e. ±25 batteries.

Batteries are shipped about two weeks after we place and pay for the order. Delivery is done by boat and train and can take between one and two months before arriving in Montreal.

To participate in the purchasing group and take advantage of the special rate, you must:

1. Pay 25% of the total amount of your order.
2. Balance due July 30 at time of shipment from manufacturer.
3. You will be notified when the material arrives in Montreal, at our warehouse. You will have one week to pick them up. Or we can ship them to you locally for an additional fee.

Flexibles PV from 50 to 290 Watts

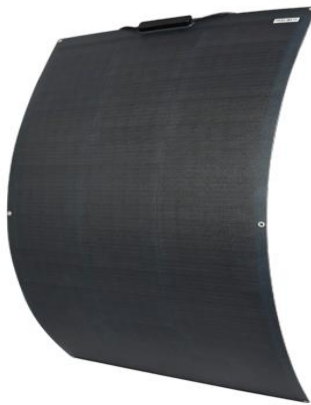
Are you interested in flexible PV? We are in contact with a manufacturer. They have seven flex panel designs. We could have them for 50% less than the market price of around \$1.25/watt (to be confirmed). However, to have the manufacturer's price, we must order a minimum of 100 panels. Let us know you are interested:

info@affordableyachting.com

Model	Dimension	Solar Cells	Specifications							
			Max Power	Efficiency	Vmp	Ipm	Voc	Isc	System Voltage	N.W.
	mm	Mono	W	%	V	A	V	A	V	Kg
SG-TF-D-50W	600*470*2	mono 210	50	22,0	18,2	2,75	21,5	2,91	DC600	0,96
SG-TF-D-100W	1170*470*2	mono 210	100	22,0	18,8	5,32	22,2	5,64	DC600	1,65
SG-TF-D-150W	1180*680*2	mono 210	150	22,0	18,8	7,98	22,2	8,46	DC600	2,44
SG-TF-D-200W	1550*680*2	mono 210	200	22,0	25,1	7,97	29,6	8,45	DC601	3,21
SG-TF-D-220W	1685*680*2	mono 210	220	22,0	27,4	8,03	32,3	8,51	DC602	3,48
SG-TF-D-250W	1450*890*2	mono 210	250	22,0	23,4	10,68	27,6	11,32	DC603	3,92
SG-TF-D-290W	1690*890*2	mono 210	290	22,0	27,4	10,58	32,3	11,32	DC604	4,57

Product Details

FLEXIBLE SOLAR PANEL SG-TF-D-200W



Anti-Slip Surface

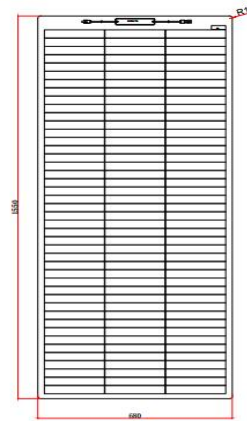


Junction Box

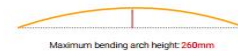
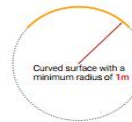


MC4

Module Diagram



Solar panel bending diagram



Electrical Characteristics

Maximum power(Pmax)	200W
Open-circuit voltage(Voc)	29.6V
Voltage at Pmax(Vmp)	25.1V
Short-circuit current(Isc)	8.45A
Current at Pmax(Imp)	7.97A
Cells Efficiency(%)	22.0%
The maximum system voltage	600V DC(IEC)
Power temperature coefficient	-0.38%/°C
Voltage temperature coefficient	-0.36%/°C
Current temperature coefficient	0.07%/°C
Output power tolerance	±3%
Operating Temperature	-40°C+85°C

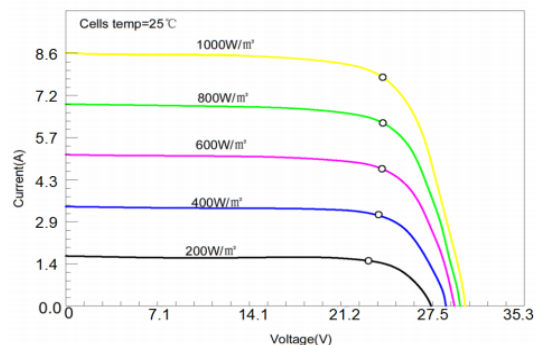
Specifications

Solar cell brand	210 mono solar cells
No.of cells and connections	132(3*44)
Module dimension	1550*680*2mm
Weight	3.21kg
Output cable	JB (2*bypass diodes) + 900mm/4mm² cable+MC4 compatible
Waterproof	IP68
Certifications	CE, ROHS
Maximum bending arch height	260mm
Warranty	5 years and service life 20 years

Product Introduction

TF series photovoltaic panel adopts proven crystalline silicon solar cell technology and polymer composite material to achieve a new type of pv module that is glass-free, lightweight and thin sheet.

The solar cells use PERC Shingle-cell technology to achieve zero cell spacing, which effectively increases the light-receiving area of the module.



CANADIAN SOLAR SOLAR PANELS

Canadian Solar is based in Ontario. Our distributor generally delivers the panel pallets in three days. If you have big plans, here are the deals to fall out of your chair.

This year the good offers are on Bi-Facial panels with Monocrystalline cells A pallet contains 30 panels. The cost is \$0.70/watt + shipping.

CS3N-390MS all-black	
Specification Data	Data sheet
Cell type	Mono-crystalline
Cell Arrangement	132 [2 X (11 X 6)]
Dimensions	1940 × 1048 × 35 mm (76.4 × 41.3 × 1.38 in)
Weight	22.5 kg (49.6 lbs)
Price (Unit)	273 \$ (by the palet) – 312 \$ unit
CS6W-535MB-AG	374 \$chaque en palette de 30 + frais expédition
Specification Data	Data sheet
Cell type	Mono-crystalline
Cell Arrangement	144 [2 x (12 x 6)]
Dimensions	2266 × 1134 × 35 mm (89.2 × 44.6 × 1.38 in)
Weight	32.2 kg (71.0 lbs)
Price (Unit)	374 \$ (by the palet) – 428 \$ unit

Note: By unit, these panels will sell for 80 cents per watt delivered to the Montreal warehouse. You will have to come get them.

Several models of the CS1H series from Canadian Solar will be available but at the time of distributing this letter, the information was still not available.

Call us for more details: +1 (450) 444-6239, [Email : info@affordableyachting.com](mailto:info@affordableyachting.com)



Follow us on Facebook: [Énergie Abordable](#)